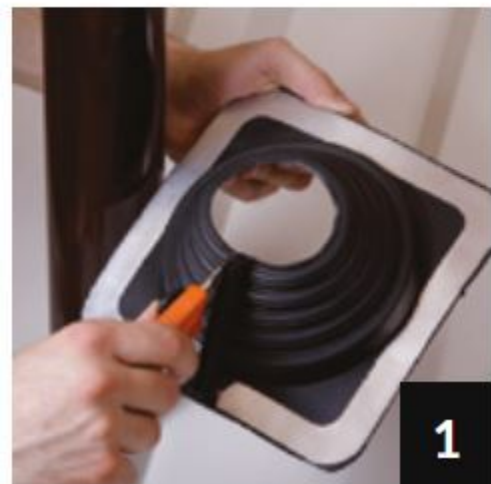


Master Flash® Multi



1

Select an appropriate Master Flash® Multi-Flash with a pipe range that goes below and beyond fitting. If necessary, follow the lines clearly shown on the flashing and create an opening 20-30% smaller than pipe diameter.

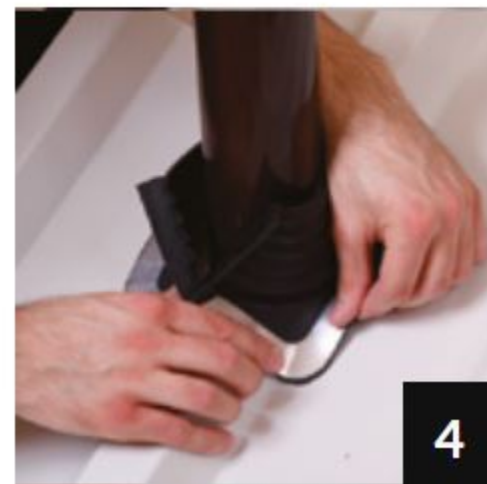


2

If using this product as a Retrofit, cut down the side in the clearly-marked flange.

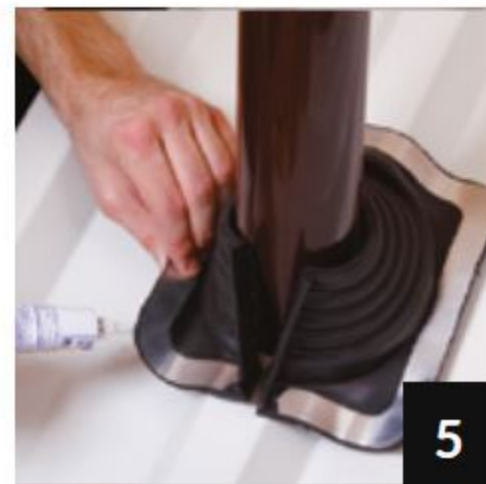


Slide the Master Flash® Multi-Flash down the pipe, using a non-petroleum-based lubricant to ease installation. For Retrofit applications, wrap the product around the pipe.



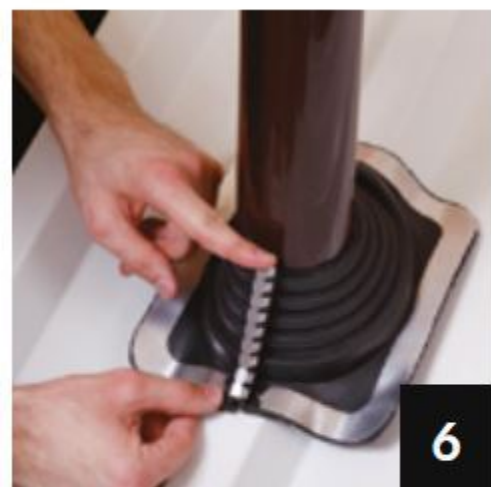
4

Press Master Flash® Multi-Flash down, bending it to conform to roof profile or irregularities. A blunt tool will help to form flashing to tight roof angles.



5

Apply sealant between the base of the flashing and the roof, as well as at the top of the flange.



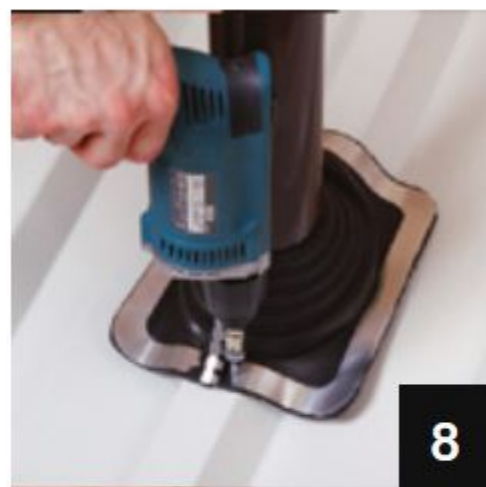
6

Place the stainless steel gripper on the flange to close and secure the Master Flash® Multi-Flash.



7

Tighten the stainless steel gripper.



8

Use fasteners to complete sealing. For a secure installation, fastener spacing must not exceed 1.5" (38



9

Additional sealant may be applied between the flashing and the pipe. Apply as needed.